

Customer :

customer

Customer part :

customer part

Comment :

Comment

S1=0.69

S2=12.48

Tmax=441

Tp S2=480.0

PI=0.05

HI=248

Sample =9107

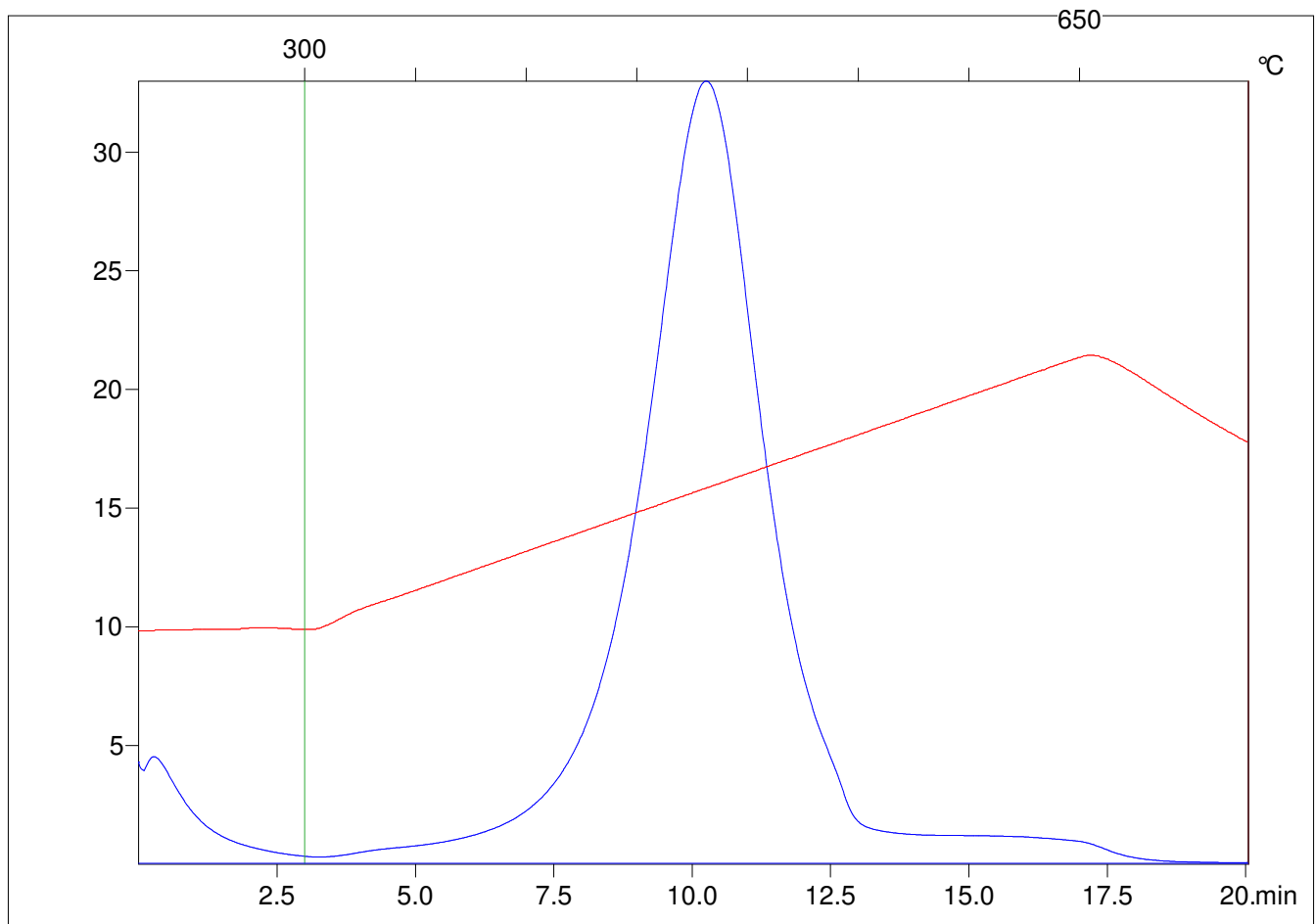
Method =Bulk Rock

Cycle=Basic

KFID(10*9)=1550

Qty =70.6

TOC=5.04



C:\VINC\PK130315\PK046.R00 : FID pyrolysis graphic

State

Pyro Status

Oxi Status